

INSTRUCTIONS

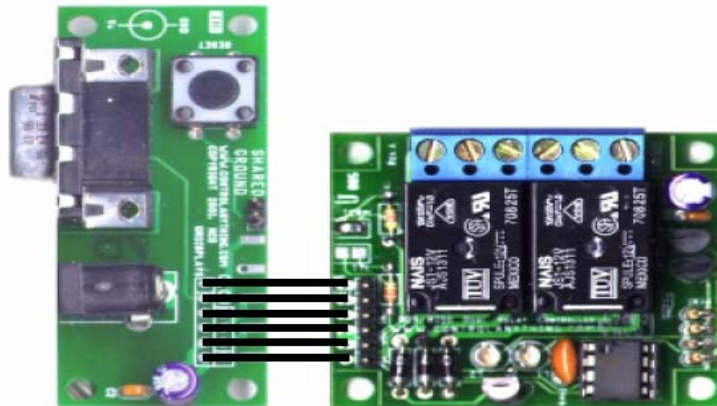
for
Wintime Deluxe Security Devices Version

Hardware:

Use the supplied serial cable to connect the computer's COM1 9-pin Serial Port to the CMSC, Ltd. Controller Board.

On the side of the board there are 6 holes for wires with 6 screws on top that will tighten down the wire after it is inserted. They are marked 1,2,3 and then another 1,2,3. This board is designed to open either 1 or 2 devices at the same time. Each 1,2,3 set controls a device. In order to send power to a device upon a successful Wintime Deluxe clocking, place the wires to the device on pairs 1 & 2. These side by side pairs will control 1 device only, allowing 2 devices to be used at the same time such as a door entry buzzer/security lock combo and a light or lamp also. The 2 wires from the CMSC, Ltd. Controller Board should be attached to the device at the same terminals as the manual switch.¹

Connect the supplied Power Adapter into AC power. Then to the power plug on the CMSC, Ltd. Controller Board. It is located on the board next to the 9-pin serial connector.



¹ Some devices offer more than one place to connect switches that power it. An empty set is preferred, but “splicing” the wires from the CMSC, Ltd. Controller Board to a manual switch should work fine and will emulate the manual switch being used.

It is also possible to use the CMSC, Ltd. Controller Board to interrupt the power going to a device that required constant power to it and only performs a desired function when power is interrupted. For this case use the 2 & 3 side by side pairs instead.

It is even possible to have one of each type of device connected. Use a 1 & 2 pair for one device and a 2 & 3 pair for the other.

Software:

The CMSC, Ltd. Controller Board requires a special version of Wintime Deluxe Software. It should be installed to the same directory as the rest of your MAGGEY Deluxe files. It is located only on the special CD included with the CMSC, Ltd. Controller Board.

Use the supplied disk to install Wintime Deluxe by either using RUN or My Computer provided by the computer's Windows operating system. Open up the proper drive as well as the file called SETUP. Although it is titled WinTime Deluxe Security Devices Version Setup, this is the normal installation dialog that will allow you to install the new software. Click NEXT past the greeting screen. Confirm that the location of your current files is correct. If you are not sure, use the browse button (the "... " button to the right of the location line) to find your current MAGGEY Deluxe installation. Once the location is correct, click the FINISH button. It should respond with a message saying that it has been successfully installed. Click the OK button and click YES to any rebooting instructions that may follow.

The next time you start Wintime Deluxe, the title should read "Wintime Deluxe Security Devices Version". Use Wintime as normal, but note the CMSC, Ltd. Controller Board's indicators will light up for 10 seconds after a successful clocking if the CMSC, Ltd. Controller Board is connected to COM3 on the computer. These indicators located behind the wire connector block, show that CMSC, Ltd. Controller Board is functioning correctly. If it is connected properly, any device wired into the CMSC, Ltd. Controller Board should give the desired result while the indicator lights are on and then stop when they go out.

If they do not light up, either COM3 doesn't exist, the board is not connected to COM3, a modem or some other device is COM3 or other software has it locked. You can change the COM port setting and the amount of time the CMSC, Ltd. Controller Board is active for, by clicking the Settings option on the Wintime Security Devices Version menu. If you do not have a mouse, you can hit the / (slash key) on the keyboard or keypad to get into the settings screen. Use the delete key to erase the box, then type in the appropriate numbers. Hit the enter key or click on the next box to change its numbers also. Hit the enter key again to get to the OK button. Click OK or hit enter again to save the settings. There is no need to restart Wintime; the new settings are used on the very next clocking. If you have any other questions please call CMSC, Ltd. Support at **1-800-864-1657**.